

 <p><b>SME</b> ENVIRONMENTAL CONSULTANTS</p> <p>679 East 2nd Ave. Unit E2, Durango, Colorado 81301 www.sme-env.com (970) 259-9595</p>	Drawn by:	Rvwd. by:	Project No.:	<b>ROAD VICINITY MAP</b>	
	KB	SA	220038		
	Date:	Rsvd. Date:	Scale:	AQUATIC RESOURCES DELINEATION REPORT TWILIGHT MEADOWS LOT 13R SAN JUAN COUNTY, CO	
	4/5/2023	NA	1:12,000		
				<b>FIGURE</b>  <b>1</b>	

Document Path: S:\Projects\220038 Twilight Meadows Lot 13R\GIS\Twilight Meadows Lot 13R ArcPro\Twilight Meadows Lot 13R ArcPro.aprx "Figure 1 Road Vicinity Map-Delin", Coordinate System: NAD 1983 StatePlane Colorado South FIPS 0503 Feet

Sources: © OpenStreetMap (and contributors), CC-BY-SA, Esri, HERE, Garmin, NGA, USGS, NPS



GENERAL NOTES

1. Project area boundary created by SME, based on surveyed boundary pins located in the field with a GPS unit, San Juan County Parcel Data and a parcel plat provided by Mountain Civil Consulting.

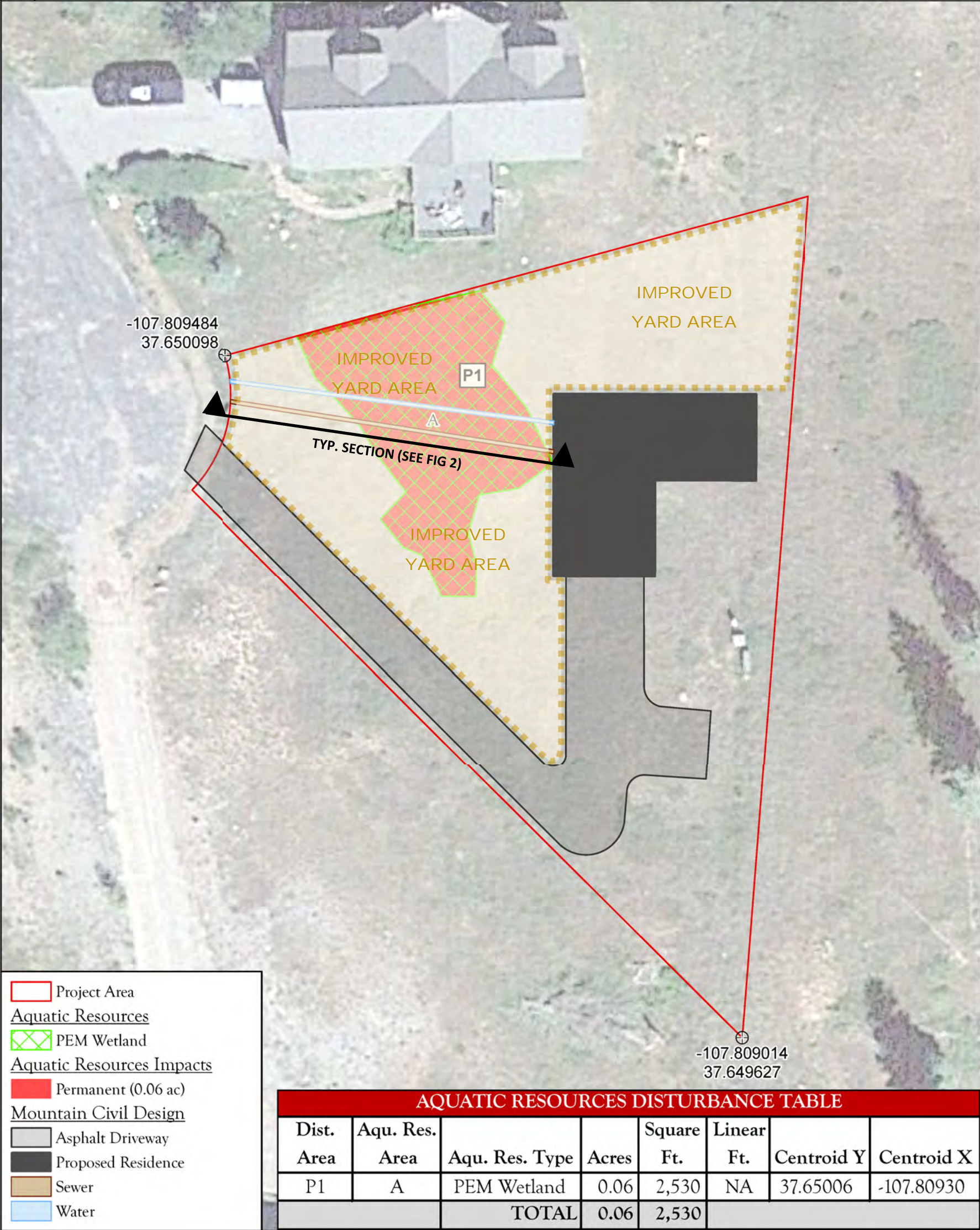
2. SME Environmental, Inc. (SME) staff visited the site on May 27, 2022 to assess and delineate the boundaries of wetlands and other Waters of the U.S. (WOUS) in the area of interest using the methodology defined in the Routine Determination procedure set forth in the U.S. Army Corps of Engineers Wetlands Delineation Manual (USACE 1987), the Regional Supplement to the Corps of Engineers Wetland Delineation Manual: Western Mountains, Valleys, and Coast Region (USACE 2010), and A Guide to Ordinary High Water Mark (OHWM) Delineation for Non-Perennial Streams in the Western Mountains, Valleys, and Coast Region of the United States (USACE 2014).

3. The boundaries of wetlands and other WOUS were survey-located using a Trimble R1 GNSS Receiver (sub-meter accuracy).

4. Areas which likely satisfy the USACE criteria as wetlands and/or WOUS are labeled. Note that WOUS continue beyond the project area boundary.

5. Aquatic resource impact table represents acreages, square feet, linear footages and centroid locations (NAD83 State Plane) for temporary and permanent impacts proposed under Nationwide Permit 29.

6. Please be aware that impacts to WOUS may require authorization from Local, State and/or Federal regulatory agencies. The limits of impacts to jurisdictional wetlands and other WOUS shown hereon are based upon current plans and renderings for submission to the USACE for Nationwide Permit 29 request. Ancillary improvement types, layouts, and proposed uses may vary somewhat as long as the nature and scope of impacts to wetlands and other WOUS is not changed.



SME

ENVIRONMENTAL CONSULTANTS

679 East 2nd Ave. Unit E2  
Durango, Colorado 81301  
www.sme-env.com  
(970) 259-9595

Drawn By: KB

Rvwd. By: SM

Proj. No.: 220038

Date: 4/5/2023

Rvsd. Date: NA

Scale: 1 in = 25 ft

N

0 20 40

Feet

AQUATIC RESOURCES IMPACTS MAP

NATIONWIDE PERMIT 29  
TWILIGHT MEADOWS LOT 13R  
LA PLATA COUNTY, CO

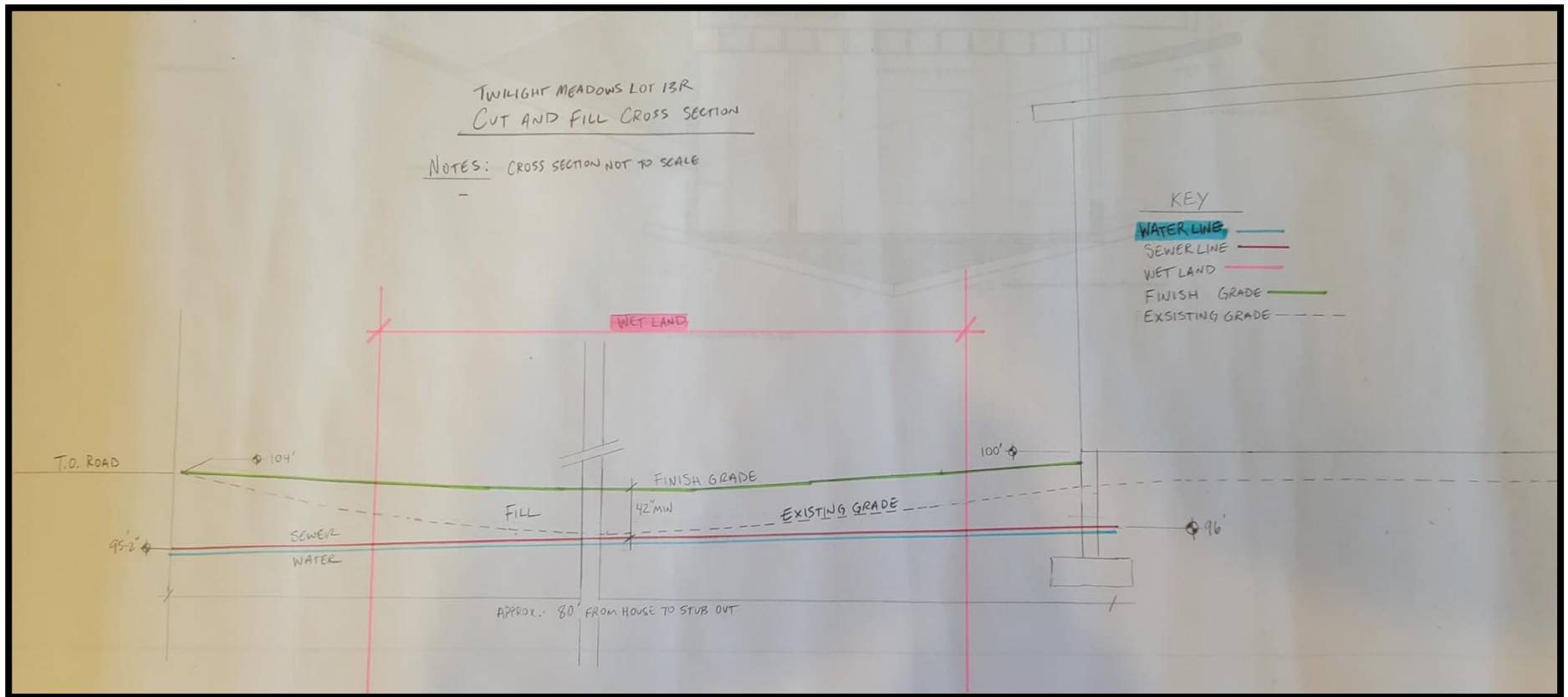
FIGURE

1

Document Path: S:\Projects\220038 Twilight Meadows Lot 13R\GIS\Twilight Meadows Lot 13R ArcPro\Twilight Meadows Lot 13R ArcPro\Map\Figure 1 Impacts Map\NWP\ Coordinate System: NAD 1983 StatePlane Colorado South FIPS 5003 Feet

Sources: Aerial Imagery provided by Microsoft Acquisition data September 8, 2014.





## TYPICAL CROSS SECTION THROUGH WETLAND A

NATIONWIDE PERMIT 29  
TWILIGHT LOT 13R

Source: Parker Harrel

## FIGURE 2